



LUCEL

GIVAUDAN/FRANCE

Where classic beauty meets  
scientific innovation

[www.arkaabeauty.com](http://www.arkaabeauty.com)





# LUCEL

## CATALOGUE

## — SELECT — LANGUAGE

Persian

فارسی



Arabic

العربية



English



Start

[www.arkaabeauty.com](http://www.arkaabeauty.com)



## SKIN CARE

- ✿ FACIAL CLEANSING FOAM Purifying ..... 4  
Oily To Acne-Prone Skin
- ✿ FACIAL CLEANSING FOAM Vitamin C ..... 5
- ✿ FACIAL PURIFYING TONER Clear Pores ..... 6
- ✿ MOISTURIZING CREAM Atopi Calm ..... 7
- ✿ EYE CONTOUR CREAM Revitalizing ..... 8
- ✿ PROTECTIVE LIP BALM with SPF ..... 9

## SUN CARE

- ✿ SUNSCREEN CREAM SPF50<sup>+</sup> ..... 11-12-13  
Oily To Combination Skin  
Light Beige - Medium Beige - Invisible
- ✿ SUNSCREEN CREAM SPF50<sup>+</sup> ..... 14-15  
Normal To Dry Skin  
Light Beige - Medium Beige
- ✿ TINT MOISTURIZING CREAM SPF30<sup>+</sup> ..... 16-17  
BB Cream  
Oily To Combination Skin  
Light Beige - Medium Beige
- ✿ CONCEALING EYE CONTOUR CREAM SPF20<sup>+</sup>  
Tinted No.1 / Tinted No.2 ..... 18-19



2



# LUCEL

## LUCEL BRAND PHILOSOPHY

**Lucel** Is A French Skincare Brand That Merges Timeless Cosmetic Tradition With Cutting-Edge Science. At Lucel, We Believe Skincare Should Be Precise, Enjoyable, And Truly Effective. Before Launching Our Products, We Conducted In-Depth Research On The Skin Conditions Of Over 5,000 French Women To Ensure Every Formula Is Safe, Effective, And Compatible With A Variety Of Skin Types, Including Sensitive Skin. Our Formulations Are Crafted Using France Dermatological Expertise, Enriched With Potent Botanical Oils And Natural Active Ingredients. With Advanced Technology And Lightweight Textures That Absorb Quickly, Lucel Products Are Ideal For Daily Use, Leaving No Greasy Or Heavy Residue Behind. Lucel Is Skincare For Those Who Expect Nothing Less Than The Best.

**WHERE CLASSIC BEAUTY MEETS SCIENTIFIC INNOVATION**

[www.arkaabeauty.com](http://www.arkaabeauty.com)





L U C C E L  
GIVAUDAN/FRANCE



SKIN  
CARE



4

LUCEL

GIVAUDAN/FRANCE

Anti-pollution

Matt Look



150  
ml

## FACIAL CLEANSING FOAM

PURIFYING

Oily to Acne-prone Skin



Gentle Cleansing  
Refreshing  
Soothing  
Sebum Regulating

### Gentle & Powerful Cleansing Action

Cleanses skin of dirt, makeup, and impurities, removes excess oil, controls sebum secretion while maintaining the skin natural moisture barrier and pH. It strengthens the skin protection against oxidative damage from pollution both indoors and outdoors.

### Use

Apply a sufficient amount of product onto damp or wet skin. Massage gently in circular motion over the face and neck. Rinse thoroughly with lukewarm water and pat dry.



# LUCEL

GIVAUDAN/FRANCE

Anti-pollution

Radiant Look



## FACIAL CLEANSING FOAM

### VITAMIN C

All Skin Types



Gentle Cleansing  
Brightening  
Skin Toning  
Hydrating

### Gentle & Powerful Cleansing Action

Cleanses skin of dirt, makeup, impurities and excess oil, brightens skin, promotes youthful and radiant appearance while maintaining the skin natural moisture barrier and pH. It strengthens the skin protection against oxidative damage from pollution both indoors and outdoors.

### Use

Apply a sufficient amount of product onto damp or wet skin. Massage gently in circular motion over the face and neck. Rinse thoroughly with lukewarm water and pat dry.



6

L U C E L

GIVAUDAN/FRANCE

Anti-pollution

Acne Control

150  
ml

## FACIAL PURIFYING TONER

CLEAR PORES

Oily to Acne-prone Skin



Clarifying  
Mattifying  
Pore Refining  
Sebum Regulating

**Multi-Tasking**

Removes excess oil and impurities, regulates sebum secretion, unclogs and tightens pores, mattifies skin and soothes inflammation. It strengthens the skin protection against oxidative damage from pollution both indoors and outdoors.

**Use**

Apply a sufficient amount of product to cleansed and dried skin of face and neck with a cotton pad, massage in circular movement. No need to rinse.



7

LUCEL

GIVAUDAN/FRANCE

Anti-pollution

Rich Emollient



50 ml

## MOISTURIZING CREAM

ATOPI CALM

All Skin Types



Hydrating  
Soothing  
Softening  
Nourishing

### Ultra-Hydration

Restores moisture level, maintains skin barrier, reduces roughness, tightness, redness and protects it from dryness. Strengthens the skin protection against oxidative damage from pollution both indoors and outdoors.

### Use

Apply liberally to cleansed and dried skin of face and neck. Gently massage. Repeat the application as often as needed.



# LUCCEL

GIVAUDAN/FRANCE

# 8

Anti-pollution

Rich Emollient



## EYE CONTOUR CREAM

### REVITALIZING

All Skin Types



Wrinkle Minimizing  
Dark Circle Correcting  
Puffiness Reducing  
Hydration Improving

### Multi-function

Revitalizes the fine skin around the eye, diminishes the appearance of dark circles and puffiness, reduce signs of dehydration and fatigue and fades away wrinkles to delay the signs of aging. It protects the eye contour area against oxidative damage from pollution.

### Use

Apply evenly a sufficient amount of product to cleansed and dried skin of eye contour area with lightly tapping motions to completely absorbed.



9

Anti-pollution

Lip Perfector

LUCEL

GIVAUDAN/FRANCE



## PROTECTIVE LIP BALM WITH SPF

ROYAL JELLY

Dry & Chapped Lips



Repairing  
Softening  
Moisturizing  
Sun Protecting

### Multi Comfort

Immediately soothes, intensely moisturizes, durably nourishes and accelerates skin repair for chapped, irritated, dry and sensitive lips. It provides UVA / UVB protection, protects lip skin against oxidative damage from pollution.

### Use

Apply evenly to the lips as often as needed. Use daily or as desired.





LUCEL

GIVAUDAN/FRANCE



SUN  
CARE



11



Anti-pollution

Light Beige

LUCEL

GIVAUDAN/FRANCE



## SUNSCREEN CREAM SPF50<sup>+</sup>

Ultra Defense Moisturizer

Oily to Combination Skin



Oil Free



Matt Finish



Moisturizing



Photo-Stable



Broad Spectrum



Foundation Effect



Water & Perspiration Resistant

### Multi-Protection

Provides UVA / UVB protection, prevents the appearance of sun damages, pigment spots, premature aging and skin dryness, strengthens the skin protection against oxidative damage from pollution both indoors and outdoors.

### Use

Apply generously at least 20 minutes before sun exposure. Reapply every two hours.





12



Anti-pollution

Medium Beige

LUCEL

GIVAUDAN/FRANCE



## SUNSCREEN CREAM SPF50<sup>+</sup>

Ultra Defense Moisturizer  
Oily to Combination Skin



Oil Free



Matt Finish



Moisturizing



Photo-Stable

Broad Spectrum

Foundation Effect

Water & Perspiration Resistant

### Multi-Protection

Provides UVA / UVB protection, prevents the appearance of sun damages, pigment spots, premature aging and skin dryness, strengthens the skin protection against oxidative damage from pollution both indoors and outdoors.

### Use

Apply generously at least 20 minutes before sun exposure. Reapply every two hours.





13



Anti-pollution

Invisible

LUCEL  
GIVAUDAN/FRANCE



## SUNSCREEN CREAM SPF50<sup>+</sup>

Ultra Defense Moisturizer

All Skin Types



Oil Free



Matt Finish



Moisturizing



Photo-Stable

Broad Spectrum

Water & Perspiration Resistant

### Multi-Protection

prevents the appearance of sun damages, pigment spots, premature aging and drying of the skin. Strengthens the skin protection against oxidative damage from pollution both indoors and outdoors.

### Use

Apply generously at least 20 minutes before sun exposure. Reapply every two hours.





14



Anti-pollution

Light Beige

LUCEL

GIVAUDAN/FRANCE



# SUNSCREEN CREAM SPF50<sup>+</sup>

Ultra Defense Moisturizer

Normal to Dry Skin



Anti-Wrinkle



Moisturizing



Photo-Stable



Broad Spectrum



Foundation Effect

Water & Perspiration Resistant

## Multi-Protection

prevents the appearance of sun damages, pigment spots, premature aging and drying of the skin. Strengthens the skin protection against oxidative damage from pollution both indoors and outdoors.

## Use

Apply generously at least 20 minutes before sun exposure. Reapply every two hours.





15



Anti-pollution

Medium Beige

LUCEL

GIVAUDAN/FRANCE



## SUNSCREEN CREAM SPF50<sup>+</sup>

Ultra Defense Moisturizer

Normal to Dry Skin



Anti-Wrinkle



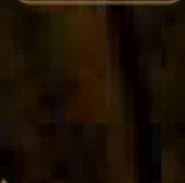
Moisturizing



Photo-Stable



Broad Spectrum



Foundation Effect



Water & Perspiration Resistant

### Multi-Protection

prevents the appearance of sun damages, pigment spots, premature aging and drying of the skin. Strengthens the skin protection against oxidative damage from pollution both indoors and outdoors.

### Use

Apply generously at least 20 minutes before sun exposure. Reapply every two hours.





# 16



Anti-pollution

Light Beige

# LUCEL

GIVAUDAN/FRANCE



## TINT MOISTURIZING CREAM SPF30<sup>+</sup> BB CREAM

Oily To Combination Skin



Oil Free



Moisturizing



Sun Protecting



Photo-Stable



Concealing



Sebum Regulating

### Multi-action

Hydrates and moisturizes skin, conceals and covers complexions, mattifies and evens out skin tone, regulates sebum secretion and protects against sun damages. Strengthens the skin protection against oxidative damage from pollution both indoors and outdoors.

### Use

Apply evenly all over the cleansed and dried skin of face and neck. Massage gently.





# 17



Anti-pollution

Medium Beige

# LUCEL

GIVAUDAN/FRANCE



## TINT MOISTURIZING CREAM SPF30<sup>+</sup> BB CREAM

Oily To Combination Skin



Oil Free



Moisturizing  
Sun Protecting



Photo-Stable



Concealing

Sebum Regulating

### Multi-action

Hydrates and moisturizes skin, conceals and covers complexions, mattifies and evens out skin tone, regulates sebum secretion and protects against sun damages. Strengthens the skin protection against oxidative damage from pollution both indoors and outdoors.

### Use

Apply evenly all over the cleansed and dried skin of face and neck. Massage gently.





18



Anti-pollution

TINTED NO.1

LUCEL

GIVAUDAN/FRANCE



CONCEALING EYE CONTOUR CREAM SPF20<sup>+</sup>

SUN PROTECTION

All Skin Types



High Protection



Anti-wrinkle



Anti-dark Circle



Anti-puffiness



Moisturizer

Concealing Effect

Water & Perspiration Resistant

### Multi-function

Corrects visible signs of skin aging around the eyes, conceals eye contour area, reduces dark spot, fine lines, dark circle and puffiness, provides UVA / UVB protection, protects skin against oxidative damage from pollution.

### Use

Apply evenly a sufficient amount of product to cleansed and dried skin of eye contour area with lightly tapping motions to completely absorbed.





19



Anti-pollution

TINTED NO.2

LUCEL

GIVAUDAN/FRANCE



CONCEALING EYE CONTOUR CREAM SPF20<sup>+</sup>

SUN PROTECTION

All Skin Types



High Protection



Anti-wrinkle



Anti-dark Circle



Anti-puffiness

Moisturizer

Concealing Effect

Water & Perspiration Resistant

### Multi-function

Corrects visible signs of skin aging around the eyes, conceals eye contour area, reduces dark spot, fine lines, dark circle and puffiness, provides UVA / UVB protection, protects skin against oxidative damage from pollution.

### Use

Apply evenly a sufficient amount of product to cleansed and dried skin of eye contour area with lightly tapping motions to completely absorbed.







# LUCEL

Get Ready  
For the Next  
Level of Skincare

GIVAUDAN/FRANCE

[www.arkaabeauty.com](http://www.arkaabeauty.com)